

**FOR
LEASE**

PLATINUM CENTRE II

74TH + LOUISE



6711 South Louise Avenue
Sioux Falls, SD 57108



SIZE

7,441 sqft
(subdividable)



PRICE

\$20 PSF NNN
Estimated NNN: \$8.15 PSF



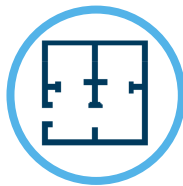
LOCATION

Site is located on Louise Avenue, the premier retail corridor in South Dakota. The property is directly across the street from the 80-acre Avera Health Campus.



TRAFFIC

22,500 VPD



LAYOUT

Wide open space, can be subdivided.



AREA TENANTS

Avera Health, Lewis, Sanford Health, Culver's, Silverstar Car Wash, First Class Dental, Security National Bank, Circle K, kRav'N, Balleraena Dance Studio, Amy Miller Training

Information deemed reliable, but not guaranteed.



TYSDAL
COMMERCIAL

7400 South Bitterroot Place
Sioux Falls, South Dakota 57108
TysdalCommercial.com

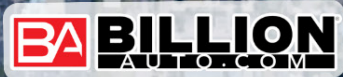


605 **310-4509**
mike@tysdalcommercial.com

AREA MAP



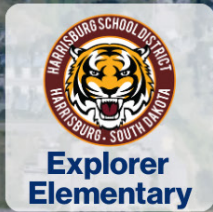
WEST 57TH STREET



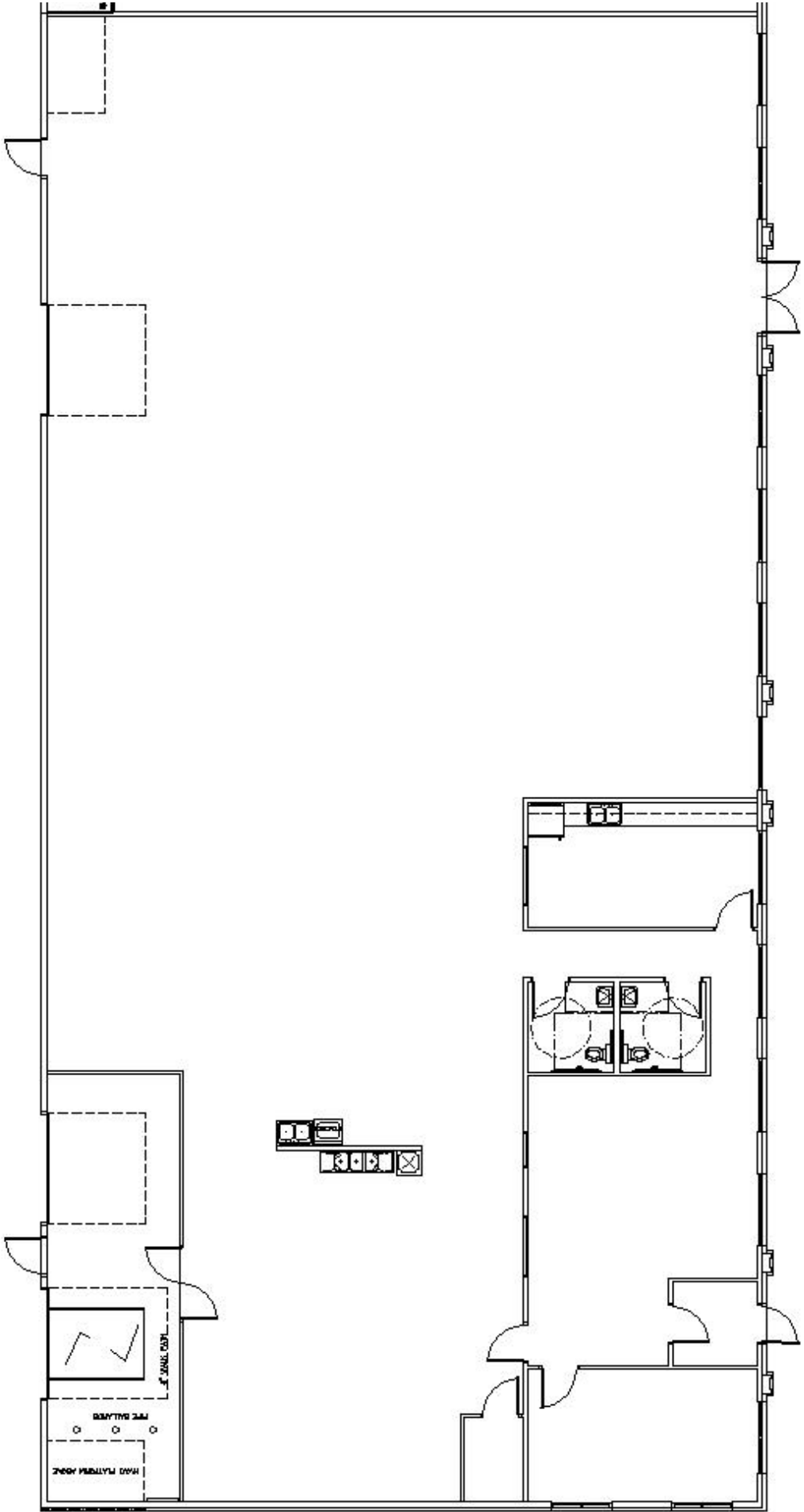
WEST 69TH STREET



LOUISE AVENUE



FLOORPLAN



PHOTOS

