



THE JOHNSON BUILDING DOWNTOWN SIOUX FALLS

DOWNTOWN OFFICE/RETAIL SPACE

225 E 11th Street, Suite 105 | Sioux Falls, SD 57104



SIZE

1,505 sqft



PRICE

\$20.00 per sqft (NNN)



LOCATION

Newly renovated building in Downtown Sioux Falls on the corner of E. 11th Street and S. 2nd Avenue.



T.I.A.

\$40.00 per sqft



LAYOUT

Frontage shell space with an open floor plan and access from E 11th Street.



AREA TENANTS

2nd Avenue Salon Suites, Lenae Design, Evans Haigh & Arndt, 605 Running Co., Hireclick, The Cattitude Café, Preach-es, Sageworth Trust Co., ACE Hardware, BIN 201, USPS, Avera, Central Bus Station, The One2.

Information deemed reliable but not guaranteed.

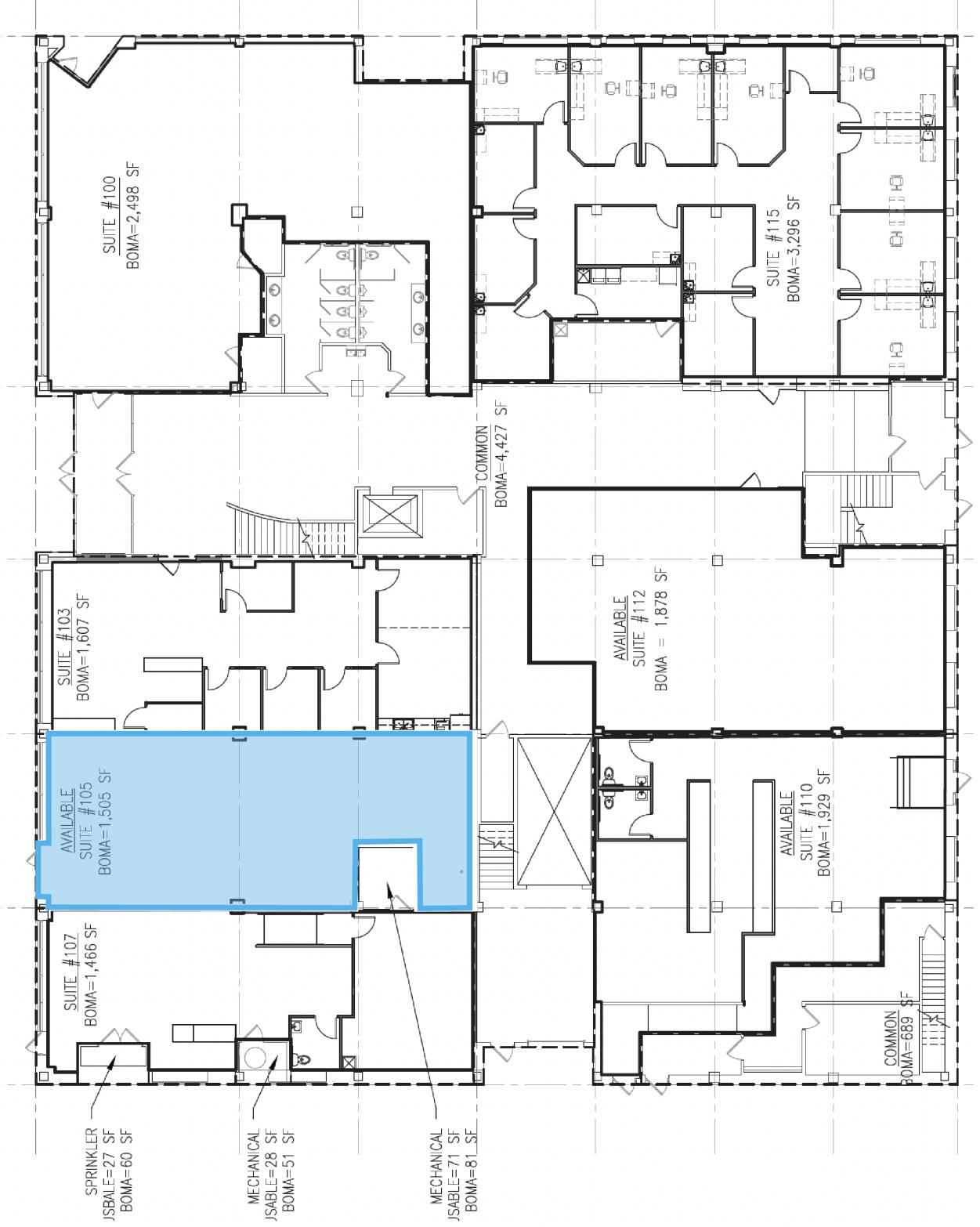


7400 South Bitterroot Place
Sioux Falls, South Dakota 57108



605.376.0127
ryan@tysdalcommercial.com

FLOOR PLAN



AREA RETAIL MAP



PHOTOS

