



KARLSON INDUSTRIAL II

TEA, SOUTH DAKOTA

CLEAN INDUSTRIAL SPACE

27084 Kerslake Place, Unit #4 | Tea, SD 57064



SIZE

2,400 sqft



PRICE

\$2,100 / mo
(gross + utilities)



DETAILS

- 1 Office with A/C
- 16' Side Walls
- 14' x 14' Overhead Door
- Mezzanine Above Office
- 1 Rear Door
- 2 Walk-In Doors
- Concrete apron, asphalt lot



LOCATION

Property is located in Kerslake 2nd Addition in Tea, South Dakota, with close proximity to Interstate 29. Site is located on the south side of Sioux Falls, SD.



LAYOUT

This unit's dimensions are 40' x 60', which includes one office, a mezzanine, a restroom, and a mechanical room.

Information deemed reliable but not guaranteed.

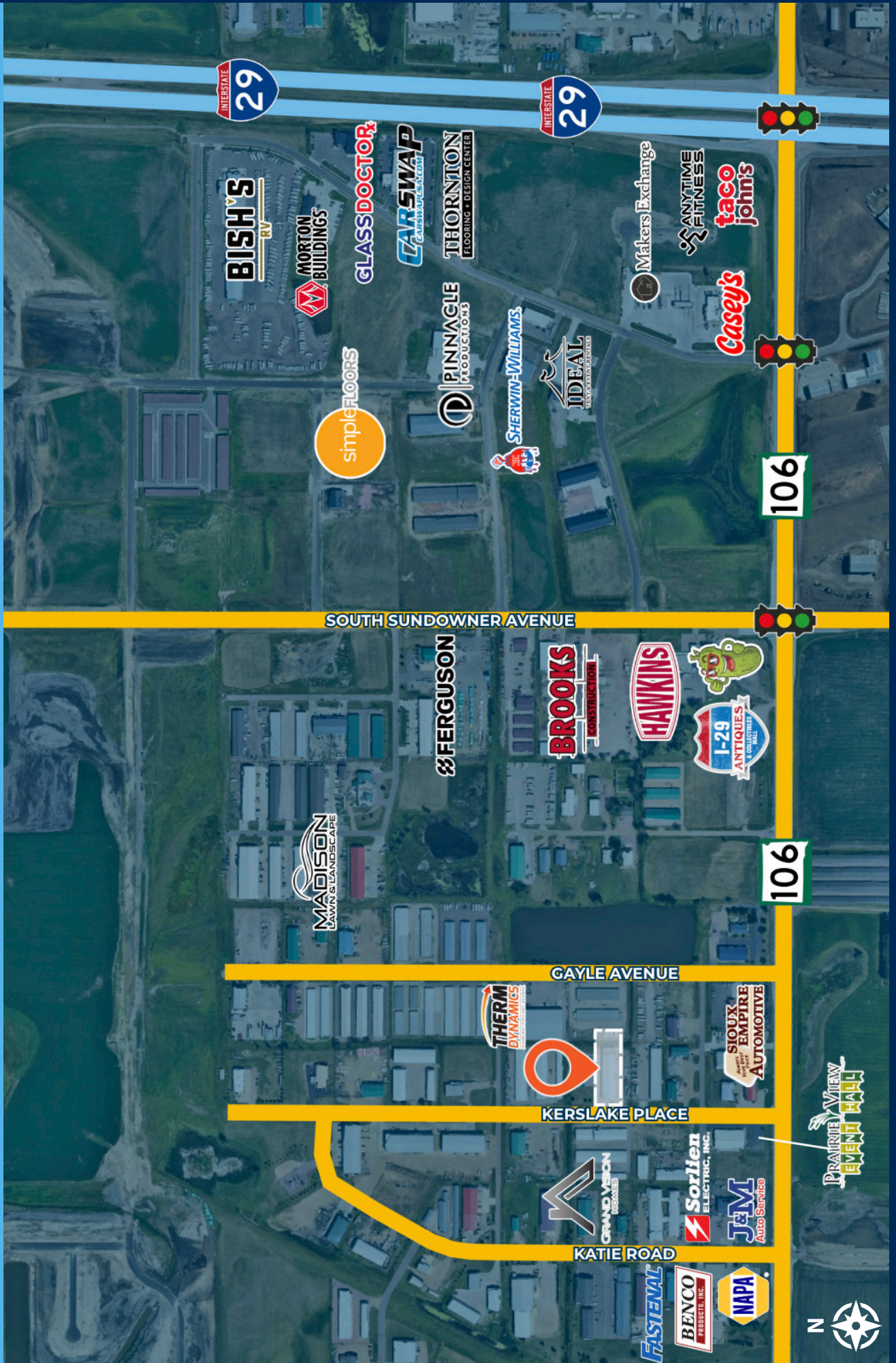


7400 South Bitterroot Place
Sioux Falls, South Dakota 57108



605.376.0127
ryan@tyسدالcommercial.com

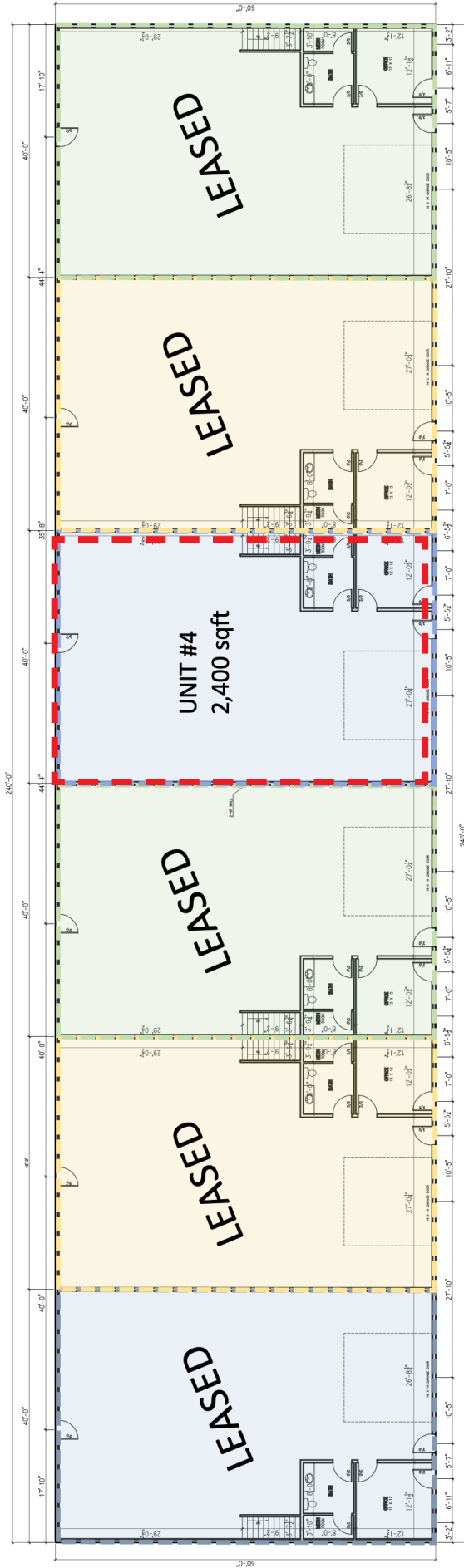
AREA MAP



PARCEL MAP



FLOOR PLAN



FLOOR PLAN
1/8"=1'-0"
14,400 SF



PHOTOS

