



# SYCAMORE COMMERCE CENTER

## 10TH + SYCAMORE

### MOVE-IN READY OFFICE SPACE

400 South Sycamore Avenue, Suite 105-2 | Sioux Falls, SD 57110



#### SIZE

1,167 sqft



#### PRICE

\$1,200 / month (GROSS)



#### LOCATION

Located at the corner of East 10th Street and Sycamore Avenue.



#### LAYOUT

Three offices, open area and restroom.



#### TRAFFIC

20,400 VPD



#### FEATURES

- Move-in ready
- Ample surface parking
- In-suite restroom
- Monument signage available
- Tenant pays janitorial and internet

Property is co-listed with Jim Dunham & Associates.  
Information deemed reliable but not guaranteed.



# TYSDAL

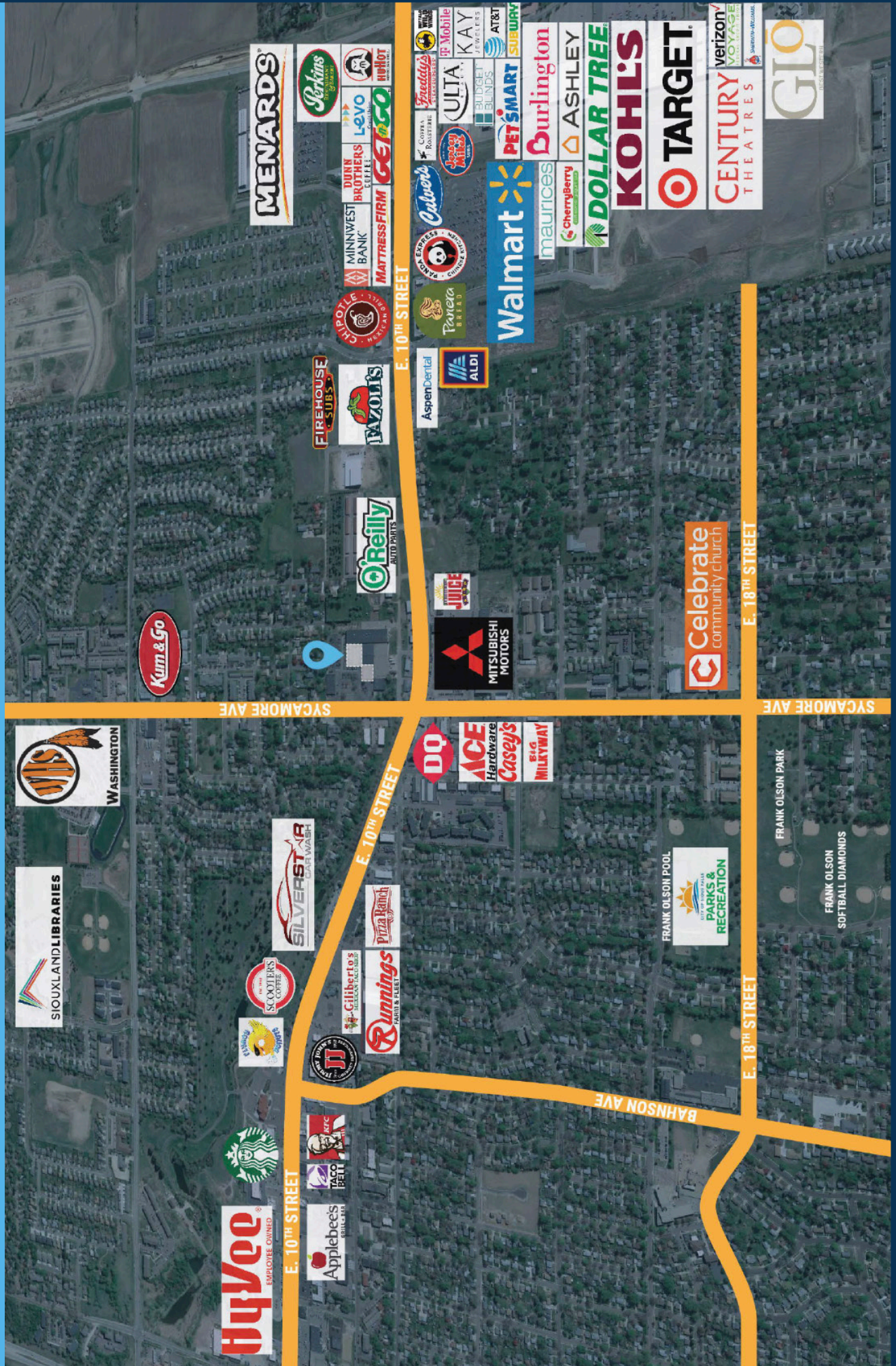
COMMERCIAL

7400 South Bitterroot Place  
Sioux Falls, South Dakota 57108  
TysdalCommercial.com



**310-4509**  
mike@tysdalcommercial.com

# AREA MAP



# PARCEL MAP



SYCAMORE AVENUE



**SUITE 105-2**  
1,167 sqft

EAST ARROWHEAD PARKWAY

# PHOTOS

