



FOSSFIELDS

VETERANS PARKWAY + MADISON STREET (SW CORNER)

5901 East Madison Street | Sioux Falls, SD 57110



SIZE

See attached



PRICE

See attached



LOCATION

High-profile location on the southwest corner of Veterans Parkway & Madison Street, directly south of Sanford / Lewis.



ZONING

Multiple C-2 Commercial and Live-Work parcels, ideal for retail, medical, office and senior housing uses. Contact broker regarding sub-dividing.



AREA TENANTS

Sanford Health, Lewis, Casey's, KwikStar, Truks & Trykes, Menards, Walmart, Target, Canterbury Village, Brandon Valley Elementary School (proposed), SF Fire & Rescue (proposed).



HIGHWAY 100

Foss Fields is located on Veterans Parkway (SD Highway 100), a 4-lane thoroughfare connecting Sioux Falls to Interstate 90. Veterans Parkway is projected to carry over 55,000 cars per day!

Information deemed reliable but not guaranteed.



TYSDAL
COMMERCIAL

7400 South Bitterroot Place
Sioux Falls, South Dakota 57108
TysdalCommercial.com



376-0127
ryan@tysdalcommercial.com

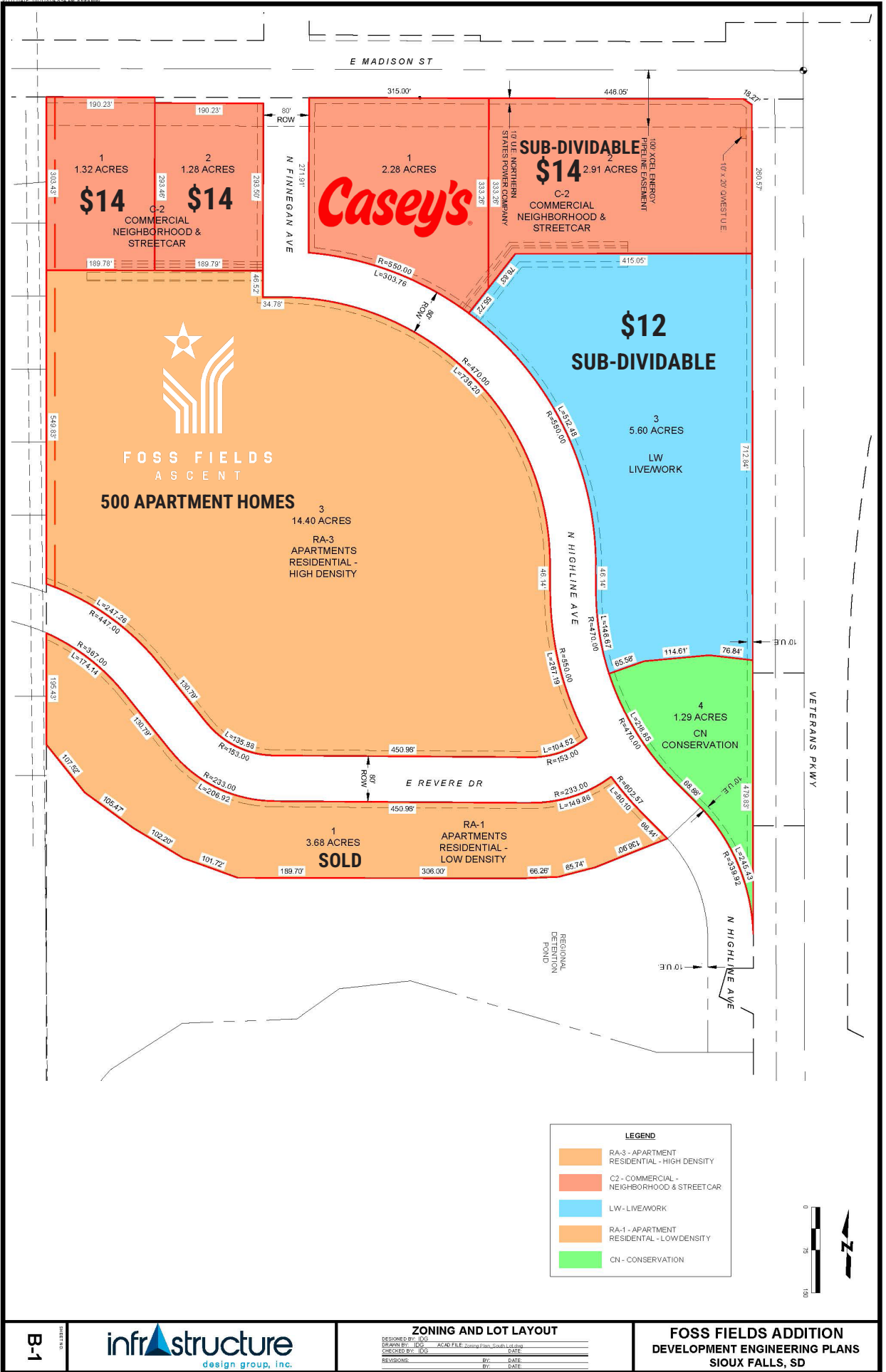
HIGHWAY 100 MAP



EASTSIDE RESIDENTIAL GROWTH IN PROGRESS



SITE PLAN PRICING



B-1



REVISIONS	BY	DATE

**FOSS FIELDS ADDITION
 DEVELOPMENT ENGINEERING PLANS
 SIOUX FALLS, SD**

SITE OVERVIEW

