



# HIGHWAY 42 SHOP

EAST SIOUX FALLS / ROWENA

## CLEAN SHOP SPACE FOR LEASE

26681 483rd Avenue | Brandon, SD 57005



### SIZE

SUITE A: 1,044 sqft  
SUITE B: 1,972 sqft



### LOCATION

4 miles east of Sioux Falls,  
near Rowena



### DETAILS

- Entire building is air conditioned
- 14' x 14' overhead door
- Service door
- 1 restroom
- 6" concrete floors
- Floor drain
- 150 amp electrical service



### PRICE

SUITE A: \$900/mo  
SUITE B: \$1,500/mo  
(Gross + Utilities)



### LAYOUT

- Open shop area
- 1 restroom

Information deemed reliable but not guaranteed.



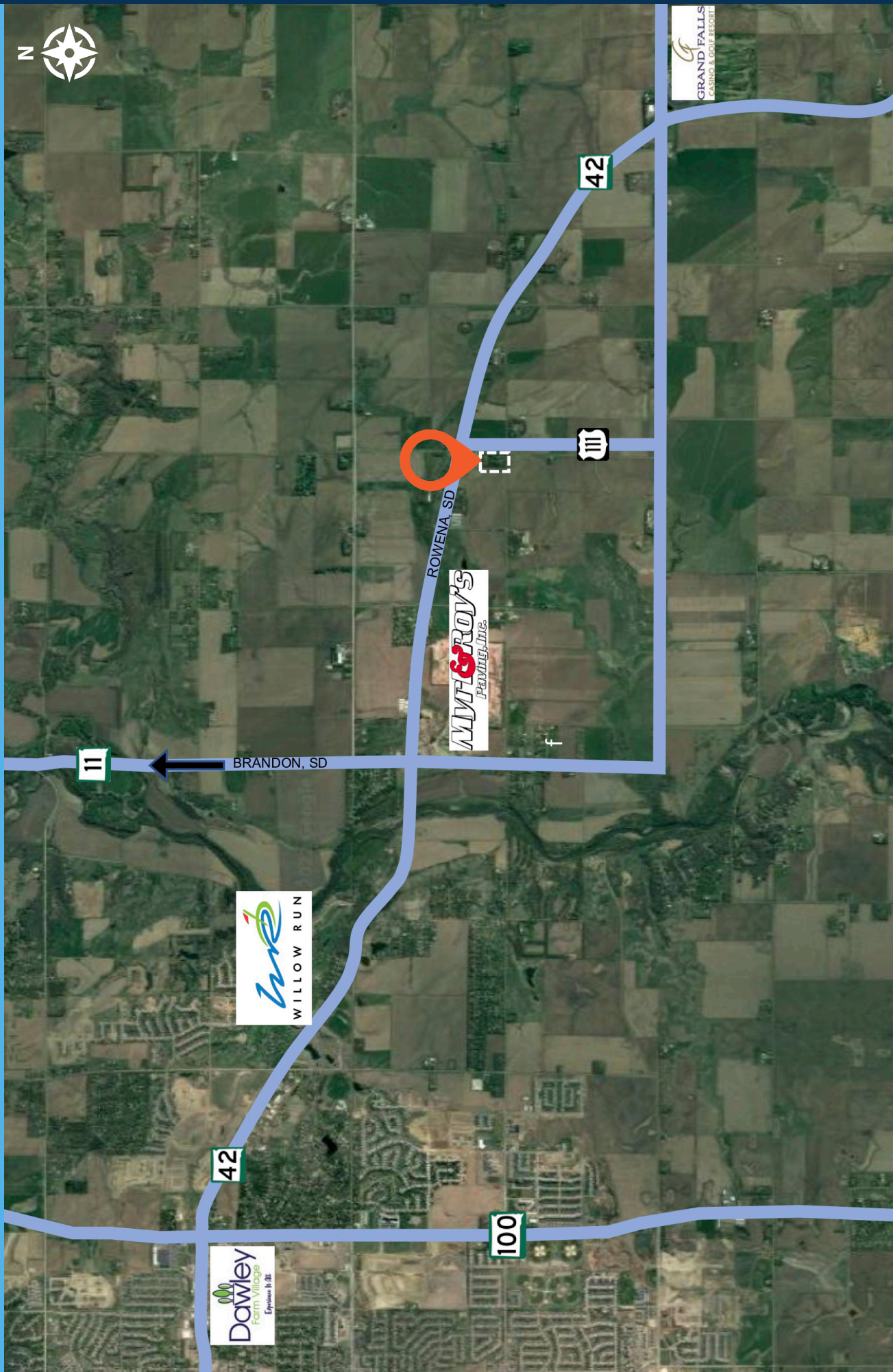
**TYSDAL**  
COMMERCIAL

7400 South Bitterroot Place  
Sioux Falls, South Dakota 57108  
TysdalCommercial.com



**376-0127**  
ryan@tysdalcommercial.com

# AREA MAP





# PHOTOS

