

EST. 1889

# PARKER

B L O C K

## DOWNTOWN OFFICE SUITE FOR LEASE

315 North Main Avenue, Suite 306 | Sioux Falls, SD 57104



AVAILABLE: May 1, 2026



### SIZE

266 sqft



### PRICE

\$425/mo Gross  
(includes gas, electric, water/sewer)



### LOCATION

Located in the heart of Downtown  
Sioux Falls on Main Avenue.

Information deemed reliable but not guaranteed.



7400 South Bitterroot Place  
Sioux Falls, South Dakota 57108



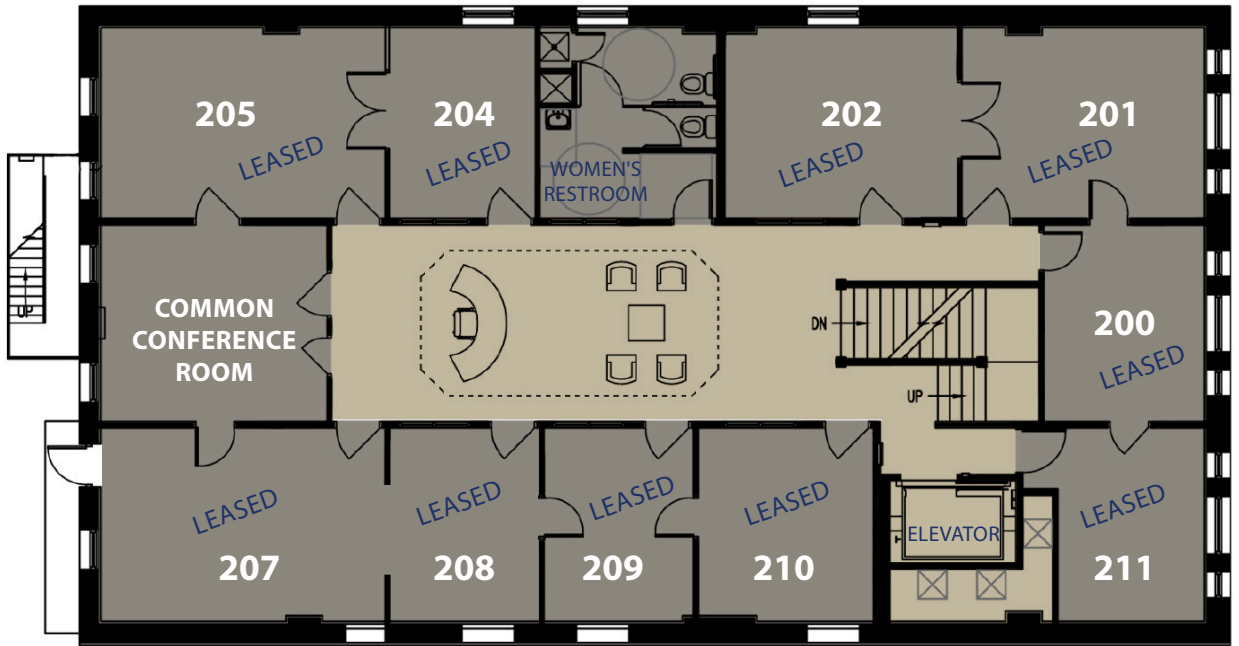
605.376.0127  
ryan@tysdalcommercial.com

# AREA MAP

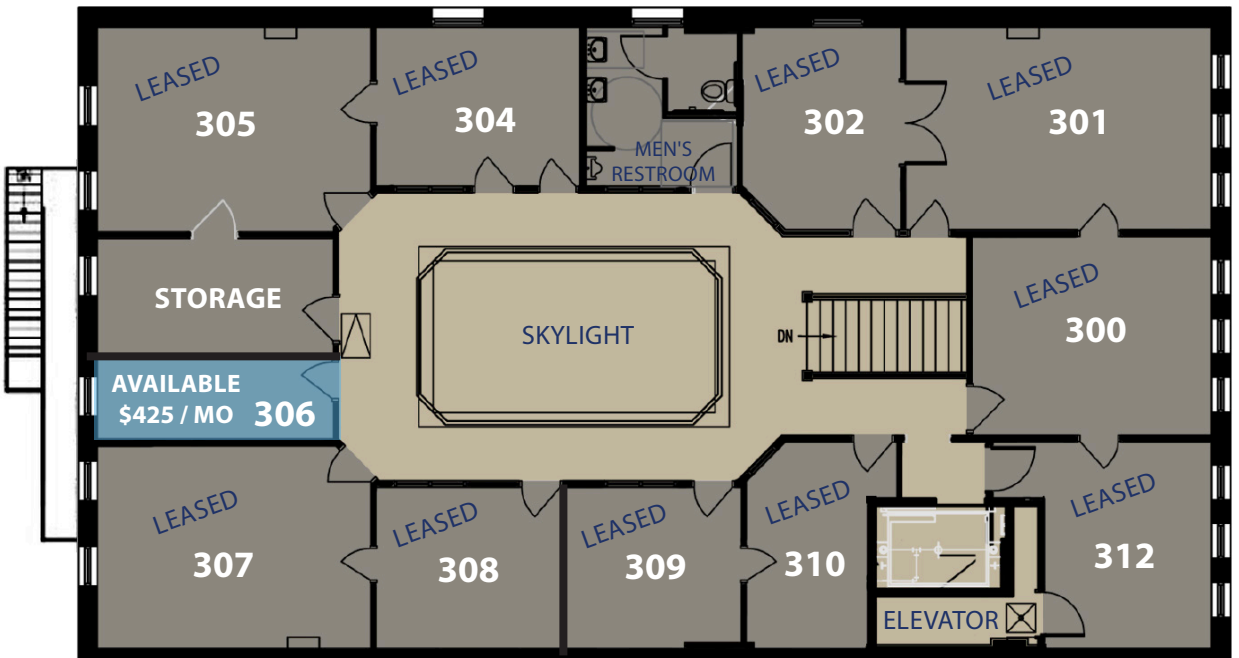


# FLOOR PLAN

## 2ND FLOOR PLAN



## 3RD FLOOR PLAN



# PHOTOS

