



WEXFORD INDUSTRIAL PARK

INDUSTRIAL SITES FOR SALE | I-229 FRONTAGE

2701 North Bahnson Avenue | Sioux Falls, SD 57104



SIZE

1.42 - 12 acres
Several parcels available.
See attached site layout.



PRICE

\$4.50 - \$5.00 psf
See attached pricing.



DETAILS

- Zoned I-2 Heavy Industrial
- Access from Bahnson Avenue
- Shovel-ready sites will be delivered level-graded, utilities stubbed to the property, and street improvements complete
- Platting fees paid by the Seller
- Served by Regional BMP



LOCATION

Wexford Industrial Park boasts high-profile visibility along Interstate 229, with close proximity to Interstate 90.



DELIVERY

Industrial pads will be delivered shovel-ready with platting fees paid.

Information deemed reliable but not guaranteed.



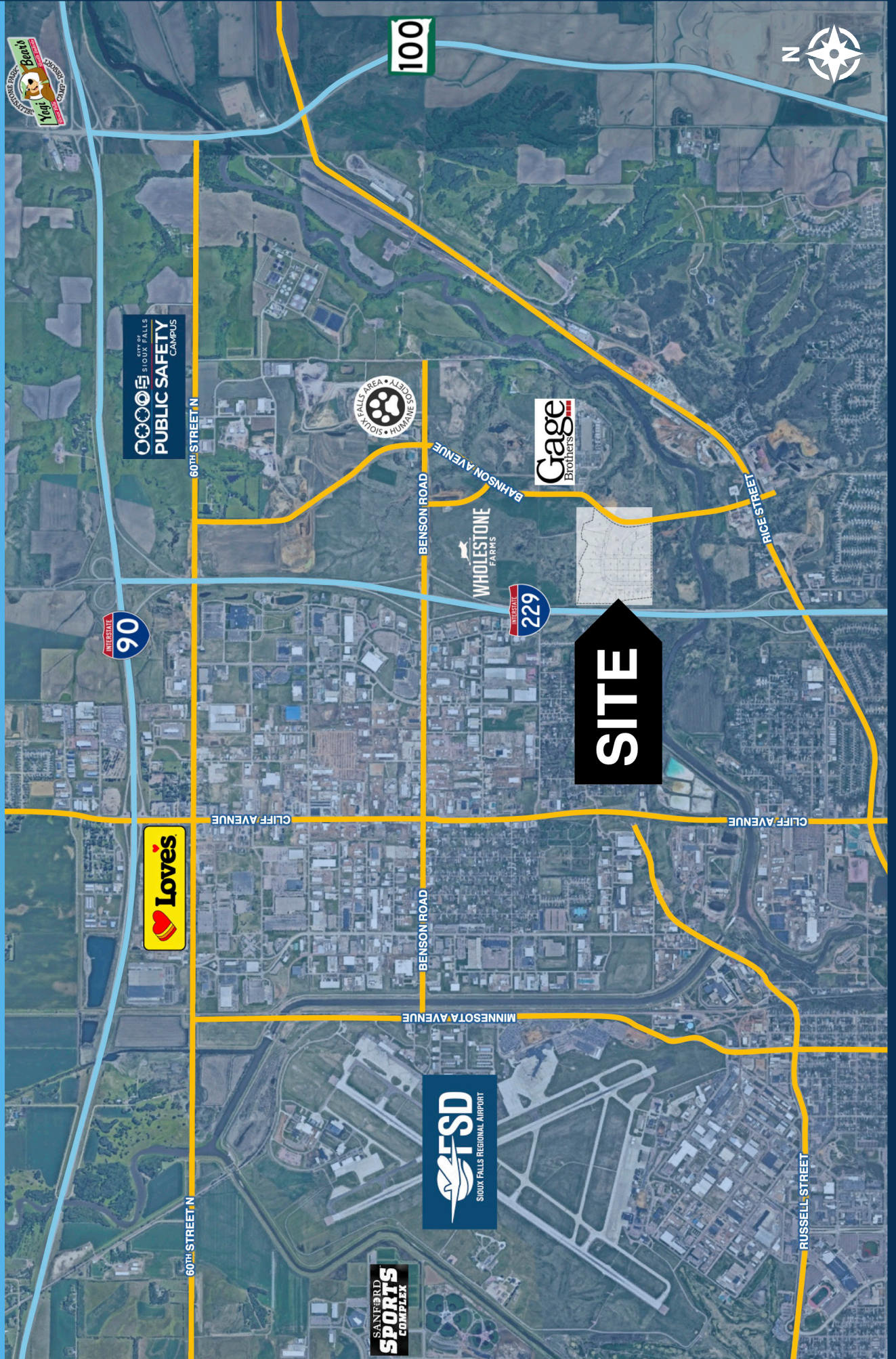
TYSDAL
COMMERCIAL

7400 South Bitterroot Place
Sioux Falls, South Dakota 57108
TysdalCommercial.com

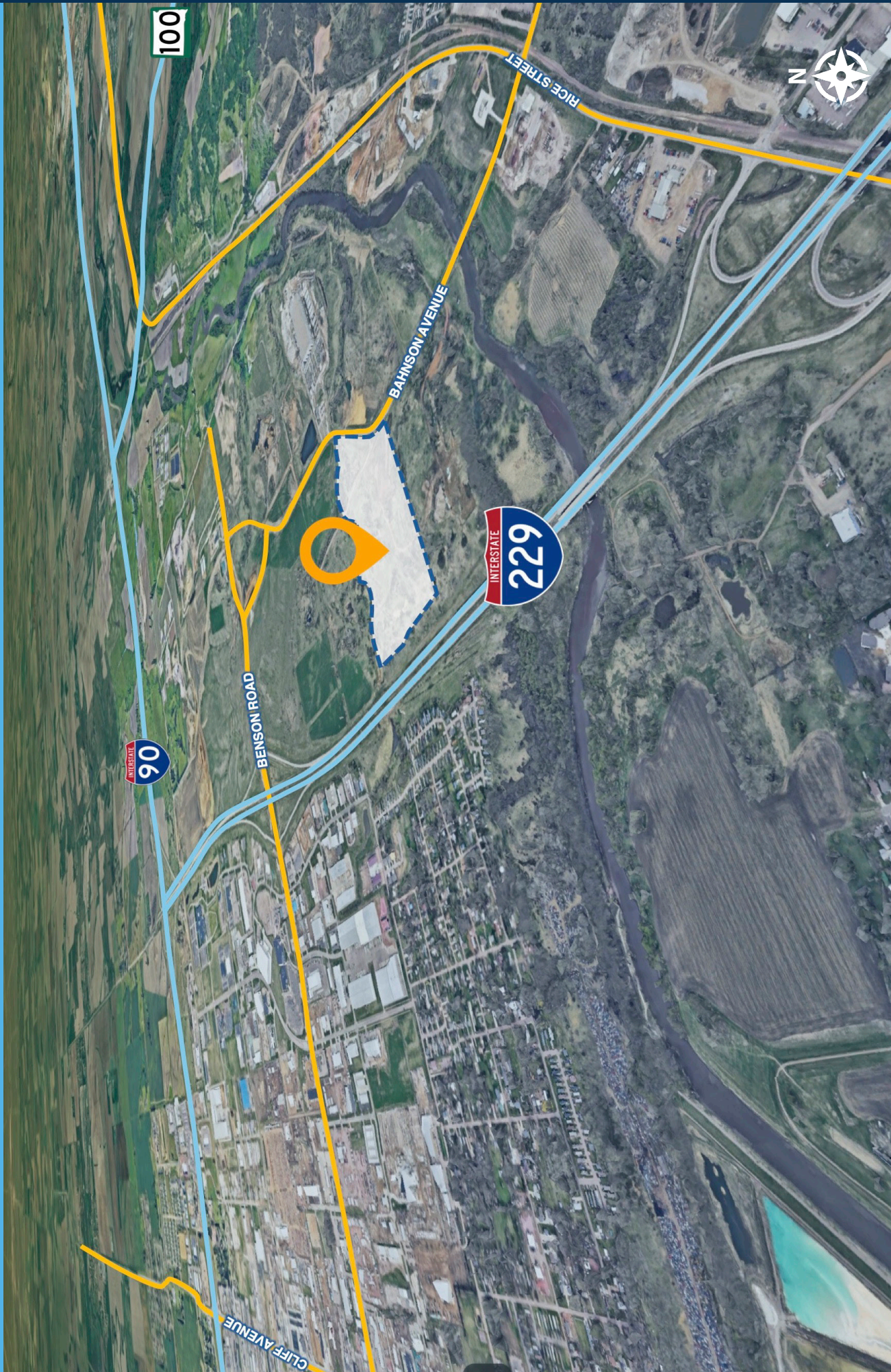


376-0127
ryan@tysdalcommercial.com

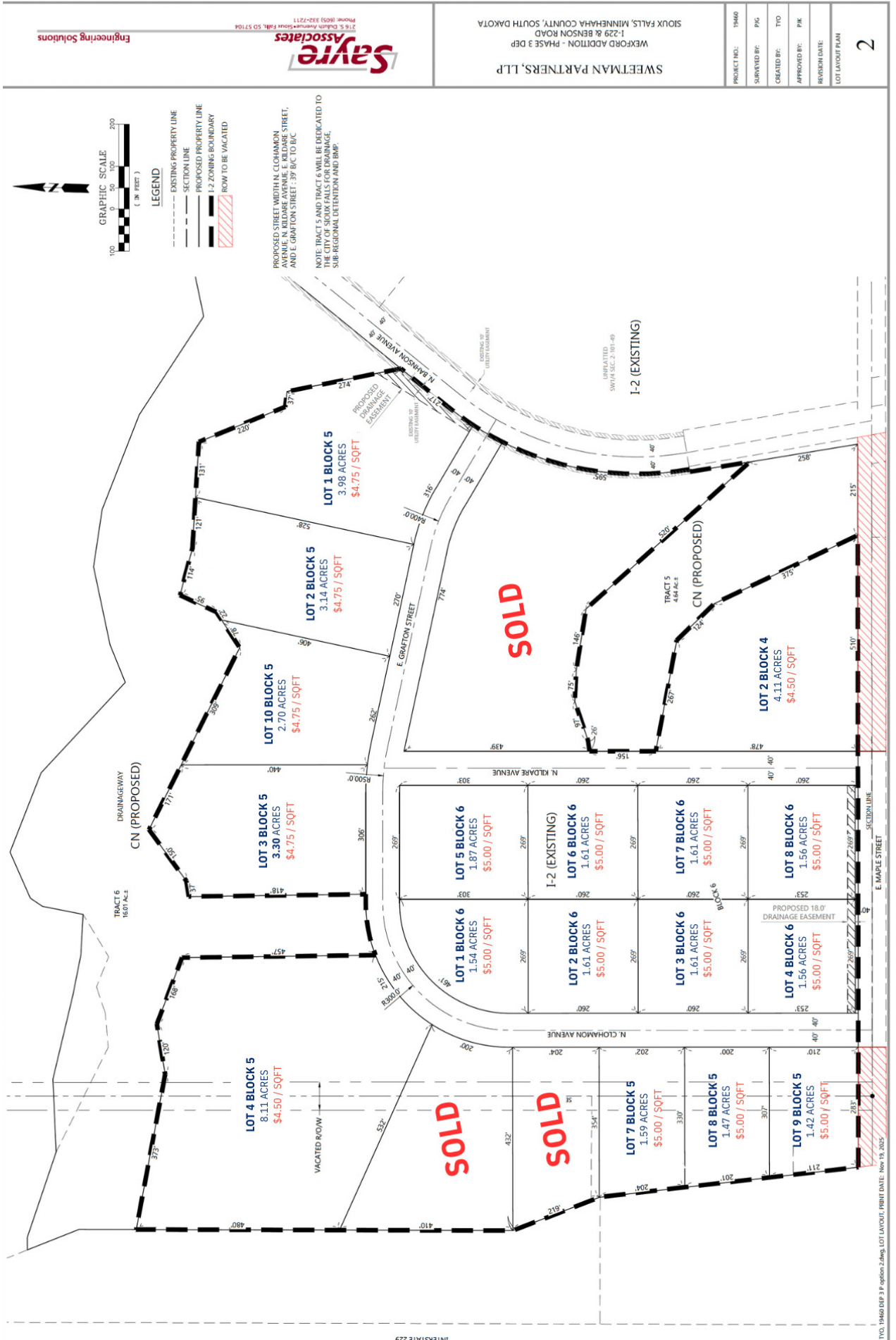
AREA MAP



SITE OVERVIEW



SITE PLAN + PRICING



INTERFAR 229

TPO, 15460 DEP, J.P. Poirson, 2.dwg, LOT LAYOUT, PPRINT DATE: Nov 19, 2025

SWEETMAN PARTNERS, LLP
WEXFORD ADDITION - PHASE 3 DEP
1-229 & BENSON ROAD
SIOUX FALLS, MINNEHAHA COUNTY, SOUTH DAKOTA

PROJECT NO.:	15460
SURVEYED BY:	PMG
CREATED BY:	TTO
APPROVED BY:	PMK
REVISION DATE:	
LOT LAYOUT PLAN	